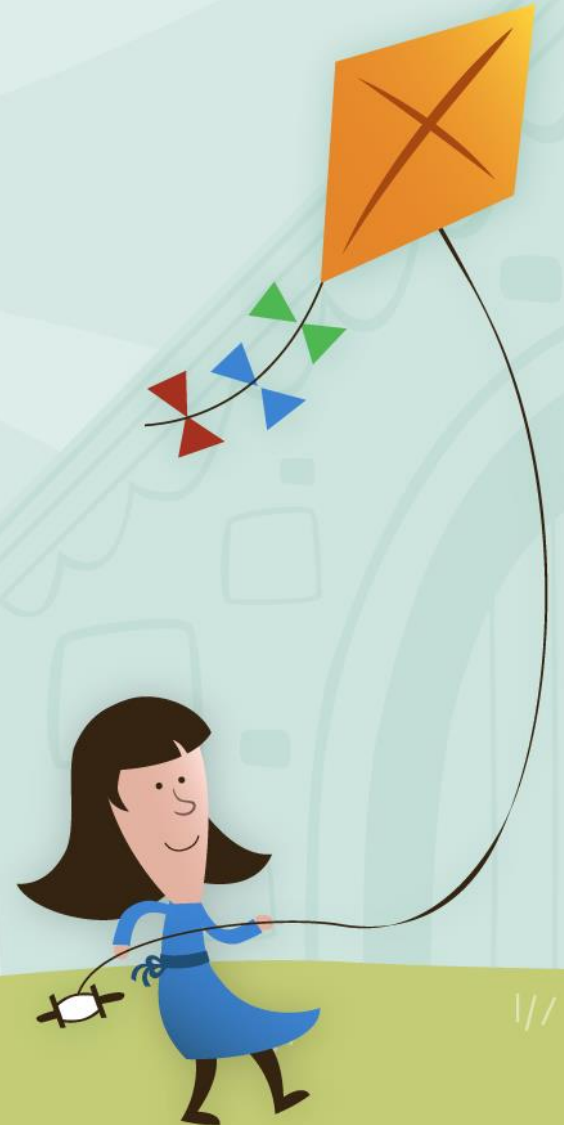


Welcome to Year 6 at Crestwood Park



HOME-SCHOOL AGREEMENT

- There have been some slight changes, so please read and they will be available to sign on Parents' Evening.
- We as teachers will also sign and adhere to the agreement.



HOME-SCHOOL AGREEMENT

As a school we will:

S M A R T	Provide a professional but approachable, friendly environment where staff work in partnership with parents/carers to provide high quality care and education.
P O L I T E	Encourage your child to take responsibility for their words and actions, encouraging them to develop positive relationships.
A W A R E	Always pledge that our children will receive high quality whole-class teaching and provide extra support when required to enable them to reach their full potential. This includes being aware of, and acting upon, the well-being and mental health needs of our children.
R E S P E C T F U L	Show respect by listening to children and parents, ensuring children are supported to learn both at school and at home.
K I N D	Use rewards and sanctions fairly. We will not tolerate bullying of any kind
S A F E	Establish a safe and stimulating environment rooted in mutual respect; where children feel safe and motivated to learn

As children we will:

S M A R T	Wear our uniform with PRIDE and display a HARD-WORKING attitude.
P O L I T E	Be well-mannered and SOCIAL to others.
A W A R E	Be aware of our school motto to Be the best and strive to be RELIABLE, RESOURCEFUL and REFLECTIVE . Be aware of the lessons we are taught to promote our well-being and mental health.
R E S P E C T F U L	Show respect for others by listening and following instructions. Respect school property and other people's belongings.
K I N D	Be kind, be POSITIVE , not say hurtful things. Keep our hands and feet to ourselves. Avoid using physical contact.
S A F E	Be honest to staff, children, and each other. Know that the adults in school will listen to us and take any concerns we have seriously.

As parents/carers we will:

S M A R T	Ensure our children arrive at school by 8.50am every day and support school policies in relation to school uniform.
P O L I T E	Encourage our children to behave well and support the school's Behaviour Policy.
A W A R E	Help our children to succeed by helping them at home with learning. This includes reading with them regularly and also working with school to support our children's well-being and mental health.
R E S P E C T F U L	Manage our behaviour in and around school, providing mature role-models in how others should be treated.
K I N D	Support children, staff and each other creating new friendships and role-modelling positive social skills.
S A F E	Raise any issues in a calm, supportive manner by contacting school directly. Work with the school and model safe and respectful behaviour when using social media.

A typical day in the life of a year 6 child...

MONDAY	Morning Activity	Assembly	SPAG	English	MORNING BREAK 10:45 - 11am	Maths	LUNCHTIME 12:00 - 1:00pm	AR	Music (Every other week - to be taught by A Johnson) RE	Computing	Storytime	
TUESDAY	Morning Activity	Assembly	SPAG	Swimming		English/Maths		AR	History	Blast on the Track	History	Storytime
WEDNESDAY	Morning Activity	Assembly	SPAG	English		Maths		AR	Science	science	Storytime	
THURSDAY	Morning Activity	Assembly	SPAG	English		Maths		AR	PE	MFL/Art	Storytime	
FRIDAY	Morning Activity	Assembly	SPAG	English		Maths		Mile Walk	AR	House Reward	PSHE	Storytime & planner update



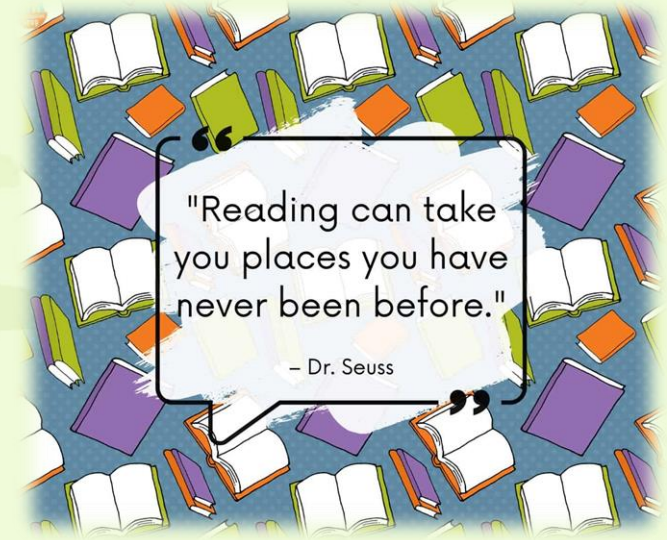
Your Child's Curriculum Journey...

Subject	Autumn 1	Autumn 2	Spring 1	Spring 2	Summer 1	Summer 2
Reading	Reading skills sessions incorporated into English lessons and taught in isolation where appropriate.					
Writing	Narrative, Description, Characters/Settings	Report, Advertising, Argument, Newspaper article	Report, Narrative, Description – setting Balanced argument	Narrative, Description, Recount	Letter, Narrative, Description, Advertising	Biography, Report, Narrative, Description,
Mathematics	Place Value Addition, Subtraction, Multiplication and Division Fractions, Position and Direction		Decimals, Percentages Algebra, Converting Units Perimeter, Area and Volume		Statistics, Properties of Shape Consolidation and Themed projects	
Science	Animals including humans	Living things and their habitats	Light	Electricity	Evolution and inheritance	Evolution and inheritance
R.E	Rites of Passage		Buddhism		Leaders In Religion	
Music	Developing Melodic Phrases- How does music bring us together?	Understanding Structure and Form- How does music connect us with our past?	Gaining Confidence Through Performance – How does music improve our world?	Exploring Notation Further – How does music teach us about our community?	Exploring notation further- How does music teach us about our community?	Respecting each other through composition- How does music connect us with the environment?
Art	Colour	Drawing	Pattern	Texture	Printing	3D Form
D.T	Celebrating culture and seasonality		Pulleys or gears		Monitoring and control	
History	Battle of Britain: Why was winning the Battle of Britain in 1940 so important?	Shang Dynasty: How did a pile of dragon bones help solve an ancient Chinese mystery?			Local Area Study	
Geography			Earth's Formations			
P.E	Games- Tag- Rugby Dance	Gymnastics- Counterbalance and Counter tension Dance	Gymnastics- Matching, Mirroring and Contrasting Fitness Testing	Games- Football OAA- Preparation and Organisation	Games- Basketball Athletics – Running, Throwing and Jumping	Games- Rounders Fitness Testing
PSHE	How can we keep healthy as we grow?		How can the media influence people?		What will change as we become more independent? How do friendships change as we grow?	
Computing	Internet Communication	Webpage Creation	Variables in Games	Introduction to Spreadsheets	3D Modelling	Sensing
MFL	Revision of previous units		Describing personality		Talking about school subjects	



Our class reading challenge to promote reading....

- Children to read every day at home, an adult will then need to sign their reading diary.
- Once a child has read 5 times, they will have a raffle ticket.
- At the end of half term, we will pick a raffle ticket out and someone will be winning a **BOOK TOKEN!**
- The more tickets, the more chances!



Class Expectations

- SPARKS

- Smart

- Polite

- Aware

- Respectful

- Kind

- Safe

- High expectations in Year 6 as they are the oldest and we are preparing them for the next part of their education journey.



Roles and Responsibilities

- Each child has a role – Sports ambassadors, SPARKS ambassadors, Digital Ambassadors, Reading Ambassadors, House Captains, Anti-Bullying Ambassadors.
- Every role is important.
- Each role will contribute to school life and will help to develop various qualities.
- Year 6 pupils should take pride in these roles.
- Other roles will include School Council, Playground Pals and Lunchtime Duty.



Statutory Tests

- SATS are scheduled to take place Monday 13th May 2024 – Thursday 16th May 2024
- Monday – English: Spelling, Punctuation and Grammar Test
- Tuesday – English: Reading
- Wednesday – Maths: Arithmetic and Maths: Reasoning
- Thursday – Maths: Reasoning



General Information

- Names in/on everything!
- Family Assemblies- Fridays at 9am
- Tuck money (25p for toast or a milkshake)
- Newsletters – Please read – some important information on these.
- Please make sure that you are able to access SCH LIFE as this is where we send messages.
- Homework due in on a MONDAY
- Swimming on a TUESDAY
- PE on THURSDAY
- 5p Fridays
- Named water bottle
- Planners and Reading Diaries – available every day.
- SATS club – children will be invited to attend (starting after half term)
- Secondary School Open Evenings – coming up – You will need to book.

